



# College & Career Readiness Update

Board Meeting  
April 4, 2024  
Agenda Item No. 9.3

**Presented by:**

Shannon Pella, Deputy Chief of Academics  
Daniel Spinka, Director, Career Readiness  
Jill Thom, Director, Master Scheduling

# Every system is perfectly designed to get the results that it gets

## SCUSD Core Values

We recognize that our system is inequitable by design and we vigilantly work to confront and interrupt inequities that exist to level the playing field and provide opportunities for everyone to learn, grow and reach their greatness.

## SCUSD GUIDING PRINCIPLE

All students are given an equal opportunity to graduate with the greatest number of postsecondary choices from the widest array of options

# Glossary of Terms

**AA**-African American

**A-G**-15 specific courses required to attend a 4 year public college/university in CA

**AP**-Assistant Principal

**APIDA**-Asian Pacific Islander Desi American

**CALPADS**-California Longitudinal Pupil Achievement Data System

**CCI**-College & Career Indicator

**CCR**-College & Career Readiness

**Completers**-Students who complete a sequence of two CTE courses

**CPA grants**-California Partnership Academy

**CSU**-California State University

**CTE**-Career Technical Education

**CTEIG**-Career Technical Education Incentive Grant

**EL**-English Learners

**FPM**-Federal Program Monitoring

**HBCU**-Historically Black Colleges & Universities

**IEP**-Individual Education Plan

**IHE**-Institution of Higher Education

**MOU**-Memorandum of Understanding

**LCAP**-Local Control Accountability Plan

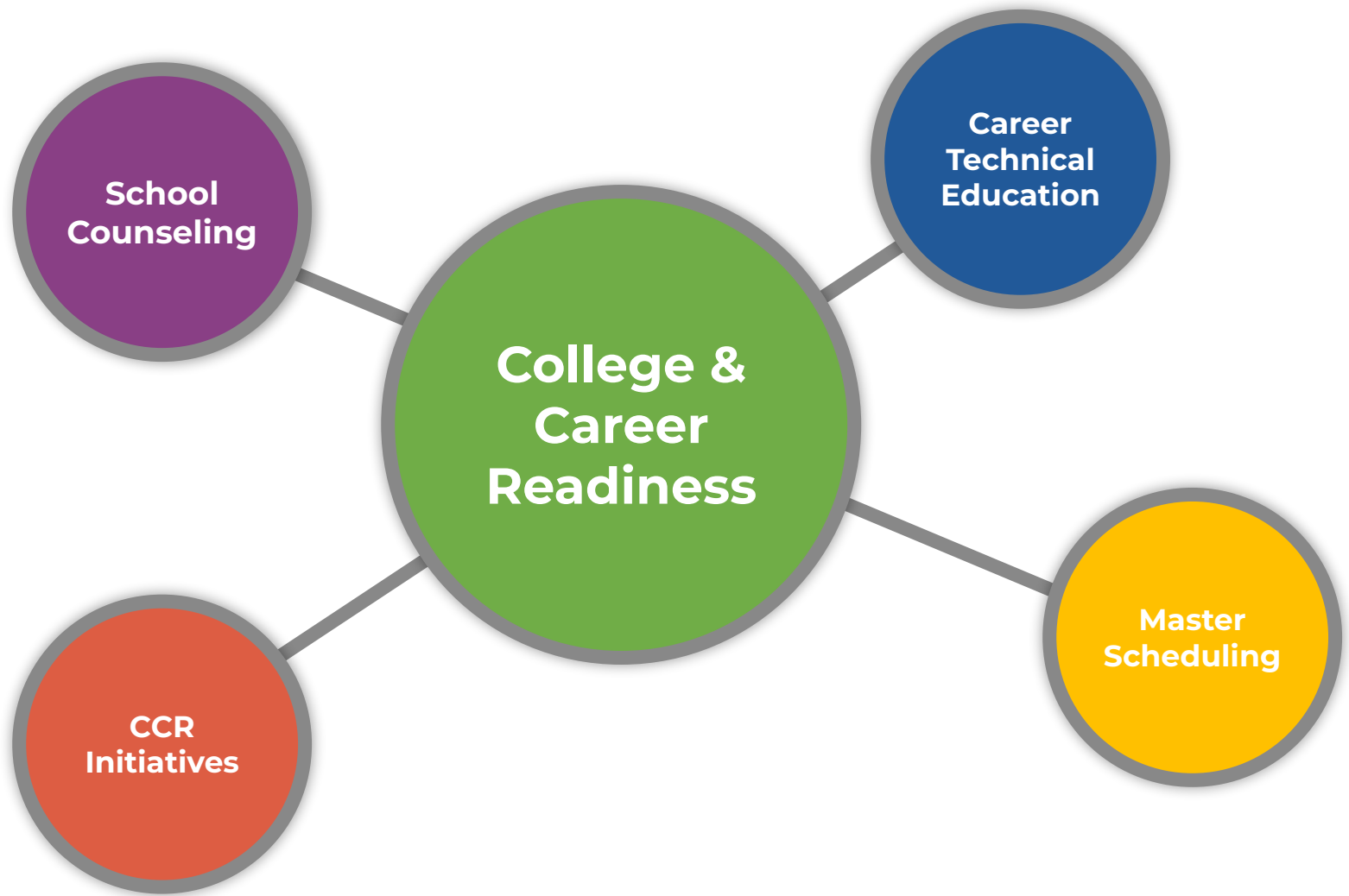
**SWD**-Students with Disabilities

**SWP**-Strong Workforce Program Grant

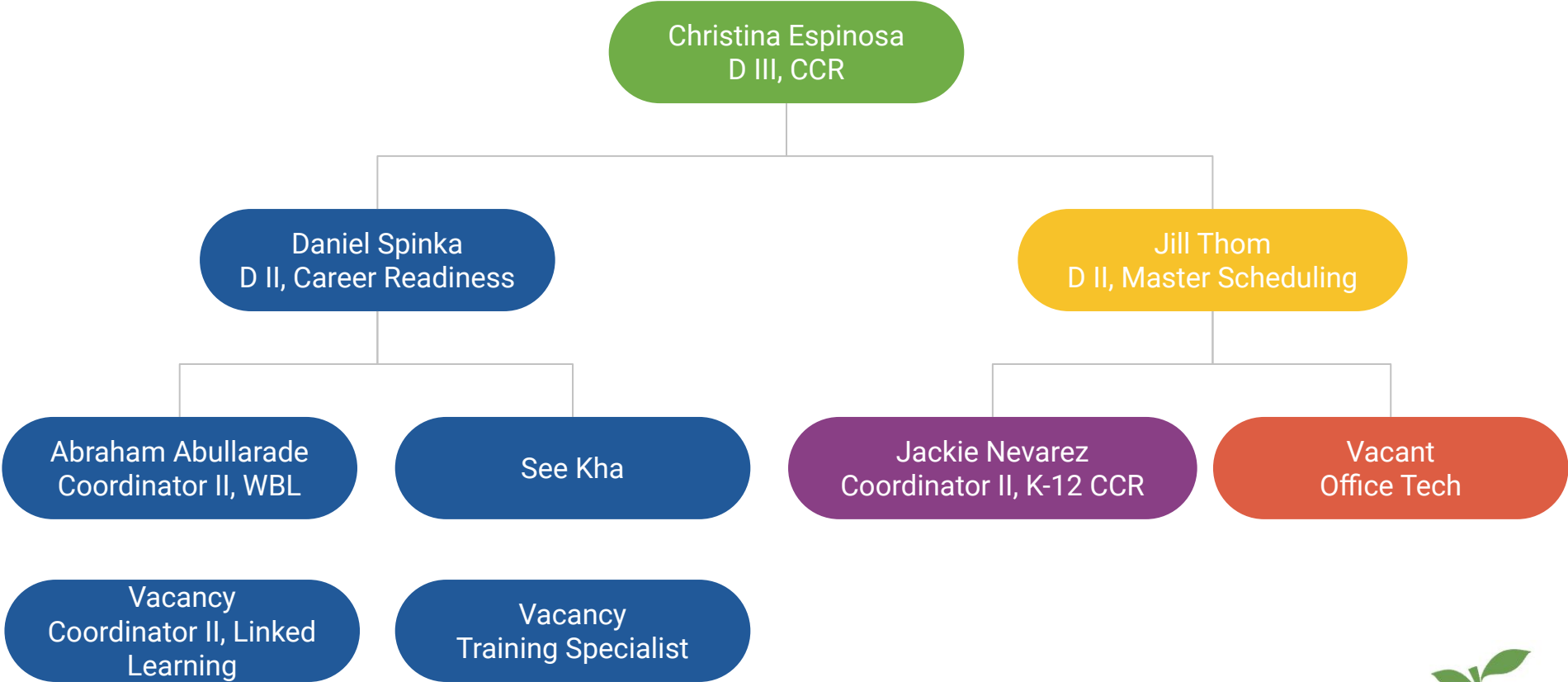
**UC**-University of California

**WBL**-Work based learning

# College & Career Readiness Department



# College & Career Readiness Team



# Career Readiness

- **23 CTE Pathways**
- **5258** students enrolled in at least one CTE pathway course

Am Indian/Alsk Nat	0%
Asian	19%
Black/African American	14%
Filipino	.01%
Hispanic	44%
Multiple	5%
Nat Hwiin/Other Pac Islndr	2%
White	15%

- **23** HS CTE Teachers

# SCUSD Pathways

2	CK McClatchy	<ul style="list-style-type: none"><li>• Legal Practices</li><li>• Public Safety</li></ul>
4	Hiram Johnson	<ul style="list-style-type: none"><li>• Design and Visual Media</li><li>• Patient Care</li><li>• Entrepreneurship/Self Management</li><li>• Public Safety</li></ul>
3	John F Kennedy	<ul style="list-style-type: none"><li>• Food Service/Hospitality</li><li>• Product Innovation &amp; Design/Manufacturing</li><li>• Product Innovation &amp; Design/Transportation</li></ul>
4	Luther Burbank	<ul style="list-style-type: none"><li>• Plant and Soil Science</li><li>• Multimedia Production</li><li>• Residential and Commercial Construction</li><li>• Legal Practices</li></ul>
4	Rosemont	<ul style="list-style-type: none"><li>• Multimedia Productions</li><li>• Mechanical Systems Installation &amp; Repair</li><li>• Engineering Technology</li><li>• Food Service &amp; Hospitality</li></ul>

# SCUSD Pathways

1	Health Professions	<ul style="list-style-type: none"><li>• Patient Care</li></ul>
2	New Technology	<ul style="list-style-type: none"><li>• Multimedia Production</li><li>• Information and Communication Technologies</li></ul>
1	School of Engineering & Science	<ul style="list-style-type: none"><li>• Engineering Design</li></ul>
3	American Legion	<ul style="list-style-type: none"><li>• Residential &amp; Commercial Construction</li><li>• Child Development</li><li>• Food Service &amp; Hospitality</li></ul>
1	West High School	<ul style="list-style-type: none"><li>• Architectural Design, Engineering Design, Engineering Technology</li></ul>



# Historical Data

	2019-2020	2020-2021	2021-2022	2022-2023
<b>Graduation</b>	<b>86.8%</b>	<b>85.8 %</b>	<b>87.8 %</b>	<b>83.4 %</b>
<b>A-G</b>	<b>53.7 %</b>	<b>54.1 %</b>	<b>49.7 %</b>	<b>50.5 %</b>
<b>CTE Participants</b>	<b>1502</b>	<b>1528</b>	<b>1329</b>	<b>2133</b>
<b>CTE Completers</b>	<b>N/A</b>	<b>222</b>	<b>333</b>	<b>424</b>
<b>Graduates + Completers</b>	<b>90%</b>	<b>76%</b>	<b>99%</b>	<b>99%</b>
<b>A-G + Completers</b>	<b>56%</b>	<b>64%</b>	<b>33%</b>	<b>60%</b>
<b>Work Based Learning</b>	<b>NA</b>	<b>407</b>	<b>1,560</b>	<b>2,985</b>

# CCR Department Goals

Alignment in support of LCAP Goal 1: Ensure Students are College & Career Ready

- Increase Graduation Rate by 5% by 2026-2027
- Increase CCI Indicator by 5% by 2026-2027
  - Increase the A-G rate
  - Increase the number of CTE completers
- Increase the number of WBL experiences by 25% by July of 2024

**Focus on special populations within each goal: AA, EL, SWD**



# Special Population Highlights

	2019-2020	2020-2021	2021-2022	2022-2023
Special Education CTE Participants	158 (10%)	198 (13%)	134 (10%)	337 (16%)
Special Education (Phase II) CTE Completers	10%	13%	13%	15%
EL (Phase I) CTE Participants	197 (13%)	216 (14%)	99 (7%)	281 (13%)
EL CTE Completers	11%	11%	12%	13%

# Special Population Work Expansion

## Focus Groups

- Industry, post-secondary, population experts and individuals with lived experience meeting once a month to work on student support, summer opportunities and date systems.

## Summer 2024

- Three cohorts
  - African American or Black students - 30
  - Multilingual students classified as Newcomers - 30
  - Students with disabilities - 10
- STEM Science Camp at Sacramento City College
  - 50 students carrying over from the three priority student populations.

# Career Readiness

## Pathway Development

### School specific modernizing

- Zero Emissions at JFK
  - Bus project (Partnership w/Communications)
- Potential Green Construction opportunities at Burbank and Rosemont
  - Partnership with Facilities
- Health Pathways Partnership with Kaiser (K-16 Collaborative)
  - Virtual reality goggles
- Potential full CTE Pathway for moderate-severe SWD
  - Charles A Jones/Special Education Department
- Education Pathway Hiram Johnson
  - Robotic dogs (Law & Justice)
  - Partnership with Safety Department

## All Schools:

- Scaling Work-based Learning
  - Civic work-based learning in partnership with UC Berkeley/City of Sacramento
  - Inclusive and accessible WBL through Pilot City
  - WBL Experiences (Guest speakers, career exploration visits, internships)
- College Information Technicians

# Career Readiness


## **Equity Work**

- Special Populations for high demand and high wage jobs coordinator funding
- Diversified advisory board with a focus on special populations
- Deepening partnerships with special populations support providers
- Career readiness summer session for SWD, AA, EL students (Pending)

## **System Alignment**

- Instructional coaching support, facilitation and PD guidance for 9th grade improvement efforts
- Support and education to site administrators for CTE, Linked Learning and other relevant bodies of work
- Interdepartment collaborations with academic office, special education, multilingual departments

## **Compliance**

- Regular Reporting and management of CTEIG, SWP, Perkins, CPA grants
  - CTE Documentation for required fields of work
  - Inventory Monitoring, vendor agreements, CALPADS reporting, FPM
  - Professional Development for CTE teachers
- 

# Master Scheduling/School Counseling

## Master Scheduling

- Direct support to Counselors, AP's, Principals around building a student centered Master Schedule
- Partnership with Multilingual Department to support Newcomer Pathway
- CTE cohorting
- Intentional support for students with IEP's

## School Counseling

- Coordination of district wide college and financial aid supports for students
- Middle and high school college campus visits
- Implementation of the SCUSD college application payment process
- Site Implementation of Early Identification and Intervention System, CaliforniaColleges.edu, Signs Of Suicide, Care Solace, and other district-wide programs Support

# College Readiness Data

CCR College and Career Fair	~800
HBCU Fair	307
Financial Aid Events	36
CCC Application Workshops	46
CSU Application Workshops	46
UC Application Workshops	44
Total Sac State Applicants	777
APIDA, Cesar Chavez, Steps to College Participants	740



# Additional CCR Initiatives

- Central office coordination of supports for students at risk of not graduating
  - Letters, targeted intervention for Foster/Homeless students
- A-G Incentive Grant (9th grade improvement work)
- Accelerate Education/Credit Recovery teachers
- Dual Enrollment MOU
- Manage the monthly Community of Practice meetings among AP's, Middle/High School Counselors, Principals, Registrars, and College Mentors
- Progress Monitors CA Dashboard metrics in the areas of A-G, Graduation, & CTE Completers and responsible for the Calpads year end submissions
- Manage data exchange MOU with local institute of higher education partners for college application/FAFSA completion

Q & A